

ÜRÜN TANIMI:	DKM Kısa Hatve Vidalı Mil Ø32-10	ÜRÜN NO (ITEM'S NUMBER)
	DKM FSU Flanşlı Somun Ø32-10	Ball Screw: 4.001.01.3210.03
DESCRIPTION OF THE GOODS:	Short Pitch Ball Screw Ø32-10	Flange Nut: 4.001.01.3210.02
	Flange Nut FSU Ø32-10	
MATERYAL:	Ball Screw-S55C /// Flange Nut- Alloy Steel 20CrMo4	

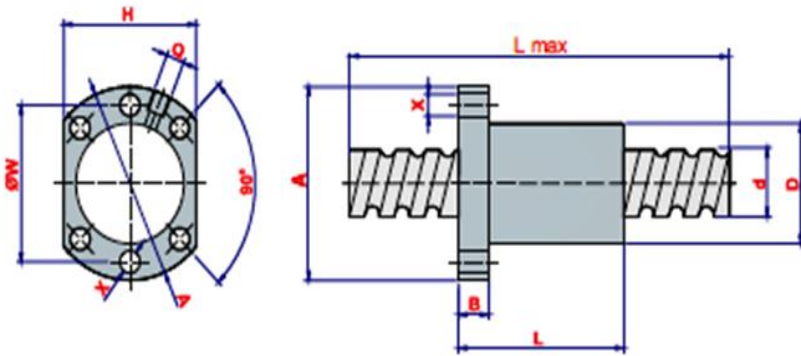
KİMYASAL ANALİZ CHEMICAL COMPOSITION % S55C	C	Si	Mn	P	S	Cu	Ni	Cr	Ni+Cr
	52-58	15-35	60-90	max. 30	max. 35	max. 30	max. 20	max. 20	max. 35
	55	21	70	16	11	10	6	12	18

20 CrMo4	C	S	Mn	Cr	Mo				
	0,17-0,23%	0-0,01%	0,6-0,9%	0,9-1,25%	0,15-0,25%				

MEKANİK ÖZELLİKLER
MECHANICAL SPECIFICATIONS

Steel grade	Çekme Mukavemeti Tensile Strength (MPa)	Akma Mukavemeti Flow Strength (MPa)	Uzama % Elongation %	Yüzey Sertliği Hardness (HRC)	Max. Çalışma Sıcaklığı Max. Work Temperature
AISI/SAE 1055 EN C55	> Ø16mm 800-950 Ø16-40mm 750-900	>Ømm 550 Ø16-40mm 500 Ø40-100mm 430	>Ø16mm 12 Ø16-40mm 14 Ø40-100mm 15	58-62	-5°C +100°C

Stok Adı	MODEL	L max	A	X	H	W	B	L	d	D	Q	Ağırlık (Weight)
Kısa Hatve Vidalı Mil	Ø32-10	6000 mm	-	-	-	-	-	-	32	-	-	Kg/Mt.: 5,55
Flanşlı Somun Ø32-10	3210 FSU (C7 0,05)	-	81	9	62	65	14	90	-	50	M6	Kg/Ad.: 0,90



Bilya Materyali

GCr15 60Hrc


FLANŞLI SOMUN YÜK KAPASİTESİ

Flange Nut Load Capacity

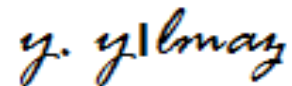
Basic Dynamic Reating Load Ca(Kgf)	Basic Static Rating Load Coa(Kgf)	Max. Speed
3390	7170	10mm/1sn.

 Onaylayan
 approved by

KYS yöneticisi

Quality Management Representative

Yüksel YILMAZ



Bu belge ile ilgili numunelerin test edildiği ve onaylı siparişteki teknik şartlara uygun olduğu teyit edilir.

We confirm that we have tested the samples related to this document and they are convenient to technical conditions at approved order.